

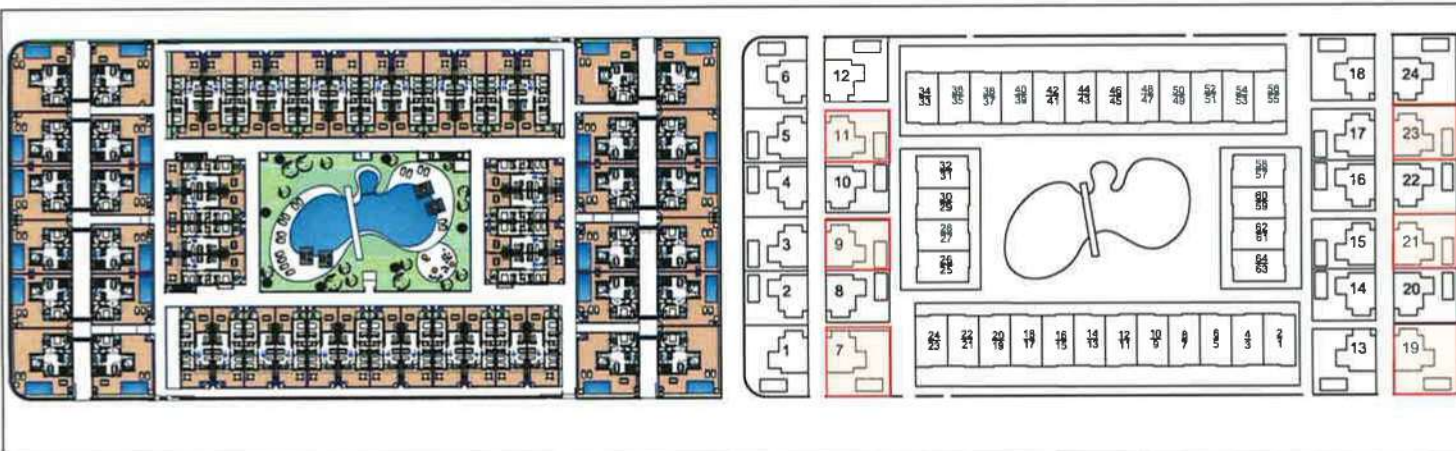


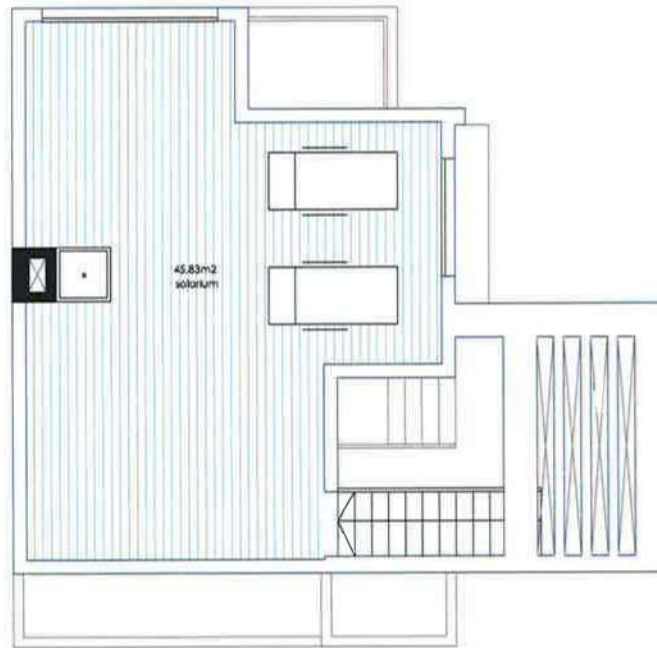
Underground	73,68 m ²
Ground-floor	75,05 m ²
First floor	68,97 m ²
Rooftop-terrace	45,83 m ²
TOTAL	263,53 m²

Villas # 7-9-11-19-21-23

Underground + ground-floor

E:1/75





Planta Solano	73,68 m ²
Planta Baja	75,05 m ²
Planta Primera	68,97 m ²
Planta Solarium	45,83 m ²
TOTAL	263,53 m²

Villas # 7-9-11-19-21-23

First floor + rooftop terrace

E:1/75

